



# AUSTRALIAN DEMENTIA RESEARCH FORUM **2024**

## FORUM HANDBOOK

**3-5 JUNE 2024**



Australian  
Dementia Network  
REGISTRY. CLINICS. TRIALS.



Platinum Partner  
**Australian Government**  
Department of Health  
and Aged Care

# CONVENOR WELCOME

Dear delegates,

Welcome to the Australian Dementia Research Forum (ADRF) 2024.

The Forum is a meeting place for national and global experts to share the latest breakthroughs in dementia research, care and policy. Under the overarching theme of **Turning the Tide on Dementia**, this year's gathering, highlights transformative innovations reshaping the landscape of our field.

We find ourselves in an era brimming with promise and potential. Recent years have borne witness to revolutions in both the diagnosis and treatment of dementia, promising to redefine clinical practice and research paradigms. The Forum endeavours to capture these significant strides in dementia research whilst confronting the challenges ahead.

This year, we are honoured to host seven distinguished speakers covering diverse topics, including anti-amyloid therapies, neuroimaging advancements, molecular determinants influencing tauopathy in Alzheimer's disease, frontotemporal dementia, the role of exercise, post-diagnostic support, and issues pertaining to ethnically-diverse populations. Furthermore, we extend a warm invitation to our colleagues from Asia and New Zealand, forging greater connections with our neighbours in the Western Pacific. We hope our broader dialogue will advance our collective efforts in addressing the multifaceted challenges posed by dementia.

Our program features eight mini-symposia, six oral sessions, and engaging poster presentations showcasing the work of emerging researchers. Encompassing the entire spectrum of dementia research, from basic science to service delivery and post diagnostic care, ADRF has become the main event on dementia science in Australia. We extend our heartfelt gratitude to the ADRF2024 Program Committee for their tireless efforts in curating this exceptional program.

For a second consecutive year, we are pleased to offer Continuing Professional Development (CPD) Sessions for medical, health and care practitioners. Taking place on Day 1 of the Forum, these sessions will delve into critical topics such as risk reduction, care pathways, deprescribing, post-diagnostic support, and anti-amyloid therapies. Accredited by the Royal Australian College of General Practitioners (RACGP) these sessions contribute to CPD points.

We are honoured to commend the contributions of Australian researchers in dementia with three prestigious awards. The ADNeT Lifetime Achievement Award in Dementia Research recognises an Australian investigator whose work has significantly advanced our understanding of dementia. The Baillieu Myer AC Award, acknowledges an Early Career Researcher for their innovative contributions to dementia research, while the newly established, Irene Mona Martin Award, honours a Mid-Career Researcher for their innovative advancements in dementia research. Thanks to the generosity of the late Irene Mona, ADNeT has recently awarded five traveling scholarships to researchers and oral presenters from interstate, remote, and rural areas.

We thank our many sponsors for their unwavering support, which has made this conference possible. Special thanks to our Platinum Partner, the Australian Government Department of Health and Aged Care, our Diamond Partner, Eli Lilly, Gold Partner, Dementia Australia and Silver Partners, CSIRO and Eisai. Additionally, we express our appreciation to the exhibitors whose support has been invaluable in ensuring the success of the Forum. Our sponsors are duly acknowledged in this Digital Handbook and on the [ADRF website](#).

We look forward to meeting you at the Australian Dementia Research Forum 2024 in Queensland, where we collectively strive to Turn the Tide on Dementia.

Sincerely,



**Professor Sharon Naismith, MAPS, FASSA**

**Forum Convenor**

**ADRF2024 Chair and ADNeT Memory Clinics Lead**

Leonard P Ullmann Chair in Psychology | NHMRC Leadership (L2) Fellow | Director, Healthy Brain Ageing Program | Faculty of Science | Charles Perkins Centre and Brain & Mind Centre | The University of Sydney, NSW, Australia

# CONTENTS

- 06** **About ADNeT**
- 10** **Organising Committee**
- 13** **Program**
- 14** **Continuing Professional Development**
- 18** **Keynote Speakers**
- 21** **Abstracts Link**
- 22** **Sponsors**
- 26** **FAQs**
- 29** **Map**

Join the conversation

   **#ADRF2024**

 [www.australiandementiaresearchforum2024.org.au](http://www.australiandementiaresearchforum2024.org.au)



## Now is the time to access tailored training in dementia care

The Australian Government supports aged care and health workers in gaining accredited and high-quality training in dementia care.

Through Dementia Training Australia, we provide:

- Free dementia training, education and resources for Australia's workforce
- Targeted and tailored onsite training for aged care providers
- Enhanced knowledge of high-quality dementia care
- Online and face-to-face training options
- Facilitated and self-paced training and resources.



Visit [dta.com.au](https://dta.com.au) or scan the QR code for more information on what training can be delivered to support and empower you and your team.



Dementia  
Training  
Australia



# Australian Dementia Network

REGISTRY. CLINICS. TRIALS.

## DEMENTIA IN AUSTRALIA

Each of us knows someone affected by dementia. An estimated 400,000 Australians are living with dementia, a figure expected to rise significantly as our population ages. Dementia is the leading cause of disease burden among Australians aged over 65, and notably, it is the leading cause of mortality among Australian women.

## THE AUSTRALIAN DEMENTIA NETWORK

The Australian Dementia Network (ADNeT) brings together Australia's leading researchers, clinicians, people living with dementia and their families creating a powerful network dedicated to advancing dementia diagnosis, treatment, prevention and care.

ADNeT's unique dementia community draws together the collective expertise of researchers from 20 universities and research institutions nationwide.

## COLLABORATION IS KEY

ADNeT collaborates with Dementia Australia on public involvement and is home to Early Mid-Career Researchers as well as the Young-Onset Dementia Special Interest Group.

**"ADNeT plays a vital role in advancing dementia research and collaboration, improving clinical practice and facilitating access to global clinical trials for Australians."**

**- Professor Christopher Rowe, ADNeT Director**

## OUR INITIATIVES

Since 2018, ADNeT has established Australia's first clinical quality registry on dementia, launched memory clinics national quality guidelines and service maps, enabled access to new diagnostic scans and blood tests, and boosted clinical dementia trials in Australia.

The collaborative work of ADNeT is the foundation to better and more equitable dementia diagnosis, treatment, prevention, care and cure.

# ADNeT Registry

The ADNeT Registry is the first clinical quality registry established in Australia for dementia and mild cognitive impairment (MCI). It systematically measures the quality of diagnosis and care for individuals newly diagnosed with dementia or MCI, incorporating the important perspectives of people with dementia and their caregivers through co-designed surveys.

The ultimate objective is to register all persons diagnosed with dementia or MCI, regardless of the diagnostic setting. Similar with other clinical quality registries, the data collected is already driving improvements in diagnostics and care.

Currently, 66% of registry participants have received a dementia diagnosis, while the remaining 34% have been diagnosed with MCI.

For more information, contact:

[adnet.registry@monash.edu](mailto:adnet.registry@monash.edu) or call 1800 314 421

# ADNeT Memory Clinics

The ADNeT Memory Clinics (MC) initiative created a collaborative network of clinicians providing a framework for the operation of participating memory clinics. This includes harmonisation of diagnostic and post-diagnostic support pathways to ensure that all Australians have access to high-quality dementia assessments, no matter where they are located.

ADNeT MC is also pioneering a management impact study on implementing blood-based biomarkers into memory clinics.

As of March 2024, 75 memory and cognition clinics and services are contributing data to the ADNeT Registry. Recruitment has exceeded 4,500 participants, including 1.4% First Nations people and 36% born overseas, with numbers steadily increasing. The Registry has achieved its objective of nationwide participation, with representation from all states and territories, including 27% of sites serving regional communities.

## Site Participation



This test will improve diagnostic accuracy and offers a less invasive, more accessible and affordable test that can be implemented widely in clinical practice.

ADNeT is also evaluating the blood test in Primary Care to support early detection and enable earlier start of treatment.

In 2021, the ADNeT MC published the first National Service Guidelines for MC Clinics, establishing benchmarks for assessment and post-diagnostic support and care, ideally provided by MC Clinics. Following completion of a pilot study and stakeholder consultations with experts on Dementia and Intellectual Disability and patients from Culturally and Linguistically Diverse backgrounds, an updated version of the Guidelines is on the ADNeT website for feedback.

We are also introducing a virtual clinic model for regional areas to enhance the efficiency and capacity of the health system in serving the Australian community.

ADNeT is facilitating uptake and implementation of evidence-based lifestyle interventions such as exercise, cognitive training, improved sleep, and dietary changes, all aimed at reducing the risk of dementia.

Furthermore, all Neuropsychologists working with people with dementia are encouraged to explore our ADNeT Neuropsychological Tool (ANNT). Launched in late 2022, this tool is designed to expedite data analysis and report writing times for patients with Alzheimer's disease and other forms of dementia.

[Find out more about the ANNT](#)



Australian  
Dementia Network  
REGISTRY, CLINICS, TRIALS

## Memory and Cognition Clinic Guidelines

National Service Guidelines for  
Specialised Dementia and Cognitive  
Decline Assessment Services in Australia

Version 2/2024



To help clinicians and consumers find a local memory clinic, we have created a [Clinics Locator](#) on the ADNeT website.

### CONNECT WITH ADNeT



@ADNeT\_Australia



@adnet-info@unimelb.edu.au



+61 3 9035 9635



[australiandementianetwork.org.au](http://australiandementianetwork.org.au)



[www.linkedin.com/company/australian-dementia-network](http://www.linkedin.com/company/australian-dementia-network)



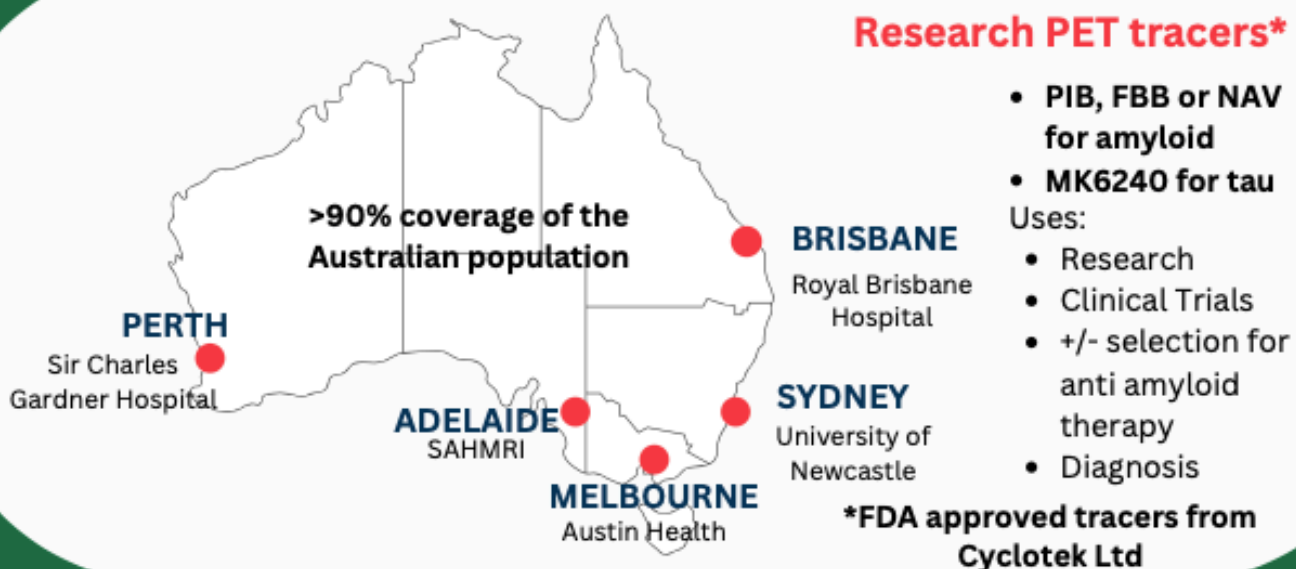
# ADNeT Screening for Trials

**>3,500**  
participants  
recruited through  
referral and  
volunteer portal +  
**>1400** screenings

ADNeT Screening for Trials streamlines the recruitment of participants for Australian researchers and the industry, facilitating trials for their therapeutic breakthroughs and research. ADNeT supports longitudinal observational research aimed at advancing our understanding of Alzheimer's disease and other forms of dementia.

We have established and implemented a national network with standard operating and analysis procedures, enhancing research capabilities and providing new technology such as novel brain scans and blood tests. These tools help identify people suitable for early treatment trials aimed at slowing and ultimately preventing dementia.

Through collaboration with international pharmaceutical partners, we endeavour to attract large clinical trials to Australia. This initiative aims to expedite the development of effective therapies for dementia prevention and treatment, ensuring broader access to potential therapies for Australians through trial participation.



**Further information:**

[Refer your patient to our Screening and Trials Program](#)

[Register to participate in clinical trials](#)

[Visit the ADNeT website](#)

# ORGANISING COMMITTEE

## *Convenor*

### **Prof. Sharon Naismith**

ADRF2024 Chair and ADNeT Memory Clinics Lead  
MAPS CCN | Leonard P Ullmann Chair in Psychology | NHMRC  
Leadership (L2) Fellow | Director, Healthy Brain Ageing Program |  
Faculty of Science | Charles Perkins Centre and Brain & Mind  
Centre | The University of Sydney NSW

## *Members*

### **Prof. Kaarin Anstey**

PhD, FAHMS, FASSA, FAPS, FRNS ARC Laureate Fellow and  
Director of the UNSW Ageing Futures Institute, Co-Deputy  
Director of the ARC Centre of Excellence in Population Ageing,  
Conjoint Senior Principal Research Scientist at Neuroscience  
Research Australia

### **A/Prof. Scott Ayton**

PhD, NHMRC Leadership Fellow (L1), Director: Centre of  
Research Excellence in Enhanced Dementia Diagnosis, Head:  
Neurodegeneration-Cognition Theme, Florey Institute of  
Neuroscience and Mental Health

### **Prof. Michael Breakspear**

BSc(med) BA (hons) MB BS PhD FRANZCP Newcastle, NSW,  
Professor of Systems Neuroscience, University of Newcastle

### **Prof. Henry Brodaty AO**

MBBS, MD, DSc, FRACP, FRANZCP, FAHMS, Co-Director Centre  
for Healthy Brain Ageing (CHeBA), UNSW Sydney

### **Prof. Elizabeth J Coulson**

BSc Hons PhD Head of School, School of Biomedical Sciences  
Faculty of Medicine Professor of Neuroscience, Queensland  
Brain Institute, Clem Jones Centre for Ageing Dementia  
Research The University of Queensland



## ORGANISING COMMITTEE



**Dr. Jurgen Fripp**

PhD, CSIRO, Team Leader, Image Analysis, Australian eHealth Research Centre



**Prof. Jürgen Götz**

PhD, Dr. habil, Foundation Chair of Dementia Research, Director, Clem Jones Centre for Ageing Dementia Research (CJCADR), Queensland Brain Institute (QBI), The University of Queensland, Brisbane, Australia



**A/Prof. Michelle Lupton**

BSc(Hons) PhD, NHMRC Boosting Dementia Leadership Fellow and Senior Research Officer, QIMR Berghofer Medical Research Institute



**Maree McCabe AM**

Former Chief Executive Officer, Dementia Australia



**Prof. Ralph Martins AO**

Professor, Macquarie Medical School, Centre for Ageing, Cognition and Wellbeing Foundation Chair and Director, Aging and Alzheimer's Disease at Edith Cowan University



**Prof. Colin L Masters**

MD, Laureate Professor of Dementia Research, Florey Institute and The University of Melbourne



**Dr. Johannes C Michaelian**

JP, BMedSc (Hons I), PhD, Research Associate, The University of Sydney, ADNeT – Memory Clinics

# ORGANISING COMMITTEE



## **Prof. Peter Nestor**

MBBS PhD FRACP Professor in Neuroscience, Queensland Brain Institute Conjoint Professor of Cognitive Neurology, Queensland Brain Institute, University of Queensland and Cognitive Disorders Clinic, Mater Hospital, South Brisbane



## **Prof. Christopher Rowe**

MD FRACP FAANMS Director, Australian Dementia Network University of Melbourne. Director, Molecular Imaging Research, Austin Health. NHMRC Practitioner Fellow



## **Prof. Perminder Sachdev AM**

MBBS, MD, PhD, FRANZCP, FAAHMS  
Scientia Professor of Neuropsychiatry at UNSW Sydney (UNSW), Co-Director of the Centre for Healthy Brain Ageing (CHeBA), UNSW, Clinical Director of the Neuropsychiatric Institute, Prince of Wales Hospital, Sydney, AUSTRALIA, Deputy Director, Australian Dementia Network (ADNeT)



## **Cherry Santos**

Chief Operating Officer, Australian Dementia Network (ADNeT), Faculty of Medicine, Dentistry and Health Sciences, The University of Melbourne



## **Dr. Edwin Tan**

BPharm (Hons), PhD, Senior Lecturer, School of Pharmacy, Faculty of Medicine and Health, The University of Sydney



## **Prof. James Vickers**

PhD DSc Director, Wicking Dementia Research and Education Centre, University of Tasmania



## **Dr. Stephanie Wong**

PhD, MAPS, NHMRC Research Fellow & Lecturer in Psychology, College of Education, Psychology & Social Work, Flinders University

# PROGRAM

3-5 June 2024

**03**

Monday

**Registration Opens:**

9:30am

**Sessions:**

10:30am – 5:30pm

**Welcome Function:**

5:30 – 7pm

**04**

Tuesday

**Registration Opens:**

8:00am

**Sessions:**

9:00am – 5:50pm

**05**

Wednesday

**Registration opens:**

8:00am

**Sessions:**

9:00am – 3:30pm

**Prizes and Awards,  
Closing**

3:30 – 4:10pm

SCAN ME!

To view the detailed program, scan the QR code here or [click this link](#).

You can also download the Sched. app!



# CONTINUING EDUCATION

## Continuing Professional Development Session 1

The session will cover four key topics and seeks to provide valuable insights and education for clinicians, general practitioners (GPs), geriatricians, specialist physicians, psychiatrists, and other experts on the most recent tests, therapies, trials, and practical aspects associated with the diagnosis and management of dementia.

JUNE  
03

# MONDAY



10:30 -11:00am

### Dementia and MCI diagnosis

**Educator:** Associate Professor Mark Yates



11:00 - 11:30am

### Risk Reduction

**Educator:** Associate Professor Jane Alty



11.30- 12:00pm

### The patient journey with cognitive decline - from Symptom Onset to Diagnosis/ Management

**Educator:** Dr Stephanie Daly



12:00-12:30pm

### Support of the care partner

**Educator:** Professor Dimity Pond



# CONTINUING EDUCATION

## Continuing Professional Development Session 2

Continuing from session 1, this session will follow the same theme with 4 new speakers.

JUNE  
03

# MONDAY



1:30 – 2:00pm

### Driving considerations

**Educator:** Professor Kaarin Anstey



2:00- 2:30pm

### Deprescribing

**Educator:** Professor Sarah Hilmer



2:30 – 3:00pm

### Post Diagnostic Support

**Educator:** Professor Lee-Fay Low



3:00 – 3:30pm

### What's on the horizon for anti-amyloid therapies and potential risks

**Educator:** Professor Bruce Brew



# CONTINUING MEDICAL EDUCATION

## Continuing Medical Education

**Title:** Safe and Appropriate Use of Anti Amyloid-Antibodies

JUNE  
03

# MONDAY

**2:00- 2:10pm**

**Introduction and overview**

**Educator:** Professor Christopher Rowe



**2:10 -2:30pm**

**Appropriate Use Recommendation**

**Educator:** Professor Colin Masters



**2:30 - 2:50pm**

**How to give an infusion**

**Educator:** Associate Professor Paul Yates



**2:50 -3:10pm**

**How to read ARIA for Radiologists**

**Educator:** Dr Lavier Gomes



**3:10 – 3:30pm**

**Post Marketing Surveillance**

**Educator:** Professor Susannah Ahern







# LILLY IN ALZHEIMER'S DISEASE:

## ADVANCING THE SCIENCE, CARING FOR PEOPLE

For over 35 years, Lilly has been driving scientific progress in Alzheimer's disease to improve outcomes for those living with the condition.

Right now, we believe we have a once in a generation chance to provide people with greater treatment options, while also reducing the economic burden at a societal level.

Through ongoing clinical trials, cutting-edge research, and actively partnering with the Australian healthcare ecosystem, we're working to achieve our 10-year vision that timely detection, accurate diagnosis and appropriate treatment will become a reality.

# KEYNOTE SPEAKERS



## **Dr Chris Chen**

Yong Loo Lin School of Medicine,  
National University of Singapore

Dr Chen is a Senior Clinician–Scientist at the Yong Loo Lin School of Medicine, National University of Singapore and is supported by a Singapore Translational Research Investigator Award from the National Medical Research Council of Singapore.

He trained at Cambridge, Oxford and the Institute of Neurology, London. His major research and clinical interests are in blood biomarkers, neuroimaging and treatment of stroke and dementia. He has published over 500 peer-reviewed papers, leads studies on the treatment and prevention of stroke and dementia and is a member of trial steering and safety committees.

As Director of the Memory Aging and Cognition Centre he has supervised over 40 post-graduate students, and as co-chair of the World Stroke Organisation’s Future Leaders Program hopes to enhance mentorship of young academics and clinicians.

Through his role as President of the Asian Society Against Dementia he aims to build more regional collaborations.



## **Associate Professor Gary Cheung**

The University of Auckland and  
Health New Zealand

Associate Professor Gary Cheung is an academic old age psychiatrist who has a joint appointment at The University of Auckland and Health New Zealand. He co-leads the dissemination and research of Cognitive Stimulation Therapy, an evidence based psychological intervention for people with dementia in New Zealand, including adapting it for Māori and Pacific peoples.

Associate Professor Cheung was awarded the 2021 Alzheimers New Zealand Fellowship to recognise his contribution to psychosocial dementia research in New Zealand. He has a special interest in postgraduate psychiatry training and is the current Chair of the Subcommittee of Advanced Training in Psychiatry of Old Age, Royal Australian and New Zealand College of Psychiatrists.

He currently leads the Chinese arm of a new Health Research Council funded 5-year multi-cultural research programme on establishing dementia prevalence, exploring experiences and expectations of dementia care, and co-creating strengths-based whole-of-system solutions to improve access and quality of dementia care in New Zealand.

# KEYNOTE SPEAKERS



## **Professor Karen Duff, PhD**

UK Dementia Research Institute,  
University College London

Professor Duff is the Centre Director of the UK Dementia Research Institute at University College London and Professor Emerita and Special Lecturer at the Department of Pathology at Columbia University Medical Center, New York.

She received her PhD from Sydney Brenner's department at the University of Cambridge in 1991. She undertook postdoc positions in London with Alison Goate from 1991-1992, and John Hardy at the University of South Florida from 1992-1994. She was an Assistant Professor at the University of South Florida from 1993-1996, Associate Professor at Mayo Clinic Jacksonville from 1996-1998, and Professor at the New York University Nathan Kline Institute from 1998-2006 followed by Columbia University from 2006-2019 where she was deputy director of the Taub Institute.

Professor Duff explores disease mechanisms and test therapeutic approaches to Alzheimer's disease, FTD and other dementias.



## **Associate Professor Ashleigh Smith**

Alliance for Research in Exercise, Nutrition and Activity  
(ARENA) Research Centre, University of South Australia

Associate Professor Ashleigh Smith is a Henry Brodaty Dementia Australia Research Foundation Mid-Career Research Fellow and the Deputy Director of the Alliance for Research in Exercise, Nutrition and Activity (ARENA) Research Centre at the University of South Australia.

Over her career Dr Smith has published >70 peer reviewed publications, book chapters and industry reports, she has also been awarded \$8.2 million in funding with \$3.7 million as CIA, including leading projects such as the ACTIVate study (NHMRFF/MRFF funded), the Small Steps study (MRFF funded) and her recently initiated Rural ACTIVate study - Re ACTIVate (funded by Dementia Australia Research Foundation).

Ashleigh leads a team of 19 including directly supervising 3 post docs, 11 students and 5 research assistants. Ash and her team are passionate about reducing dementia risk in older adults most at risk of dementia by targeting modifiable dementia risk factors and translating that information into feasible and enjoyable intervention studies.

# KEYNOTE SPEAKERS



## **Professor Peter Nestor**

University of Qld and the Mater Hospital, QLD

Peter Nestor is conjoint professor of cognitive neurology at the University of Queensland and the Mater Hospital, where he established the Memory and Cognitive Disorders Clinic in 2018.

He trained in neurology in Melbourne and at the National Hospital for Neurology and Neurosurgery, Queen's Square, London in the 1990s and then did a PhD in cognitive neurology at the University of Cambridge.

Afterwards he remained at the University of Cambridge/Addenbrooke's Hospital for several years as a clinician-scientist. From 2012, until returning to Australia in 2017, he was Professor of Cognitive Neurology at the German Center for Neurodegenerative Diseases (DZNE). His research focuses on neuropsychology and brain imaging in neurodegenerative diseases that cause dementia.

His research publications have received over 18,000 citations with an H-Index of 69; his book contributions include chapters for the Oxford Text of Medicine; the Oxford Textbook of Cognitive Neurology and Dementia; and Dementia 5th Ed.



## **Dr Heidi Jacobs**

Massachusetts General Hospital, Harvard Medical School, United States

Heidi Jacobs is an Associate Professor of radiology at Massachusetts General Hospital and Harvard Medical School and visiting Associate Professor at Maastricht University (Netherlands). She directs the Jacobs Lab with a focus on improving the early detection and treatment of sporadic Alzheimer's disease by targeting the initial brain sites of pathology, the neuromodulatory subcortical systems. She is co-leader within the Harvard Aging Brain Study, Chair of the "neuromodulatory subcortical systems" professional interest area of ISTAART and advisory council member of ISTAART. Her work is supported by the NIH-NIA, BrightFocus Foundation and Alzheimer Association funding.

Heidi Jacobs was trained in Biological psychology in the Netherlands, worked for several years in a clinical setting as a psychotherapist and neuropsychologist in Belgium, and in 2011 obtained her PhD in clinical neuroscience in the Netherlands. After her postdoctoral training in Germany, she received the prestigious VENI-independence award to start her own lab. Dr. Jacobs has published over 130 peer-reviewed research articles and received the de Leon Neuroimaging award for the best neuroimaging paper of 2021 and the International Junior Investigator award from the International College of Geriatric Psychoneuropharmacology.

# KEYNOTE SPEAKERS



## Dr Stephen Salloway

Founding Director of the Memory and Aging Program at Butler Hospital, Associate Director of the Brown Center for Alzheimer's Disease Research, Brown University, United States

Dr. Salloway is an internationally recognized leader in clinical trials for the prevention and treatment of Alzheimer's disease. He received his MD from Stanford Medical School and completed residencies in neurology and psychiatry at Yale University. He is the founding Director of the Memory and Aging Program at Butler Hospital, Associate Director of the Brown Center for Alzheimer's Disease Research, and Professor of Neurology and Psychiatry at the Department of Psychiatry and Human Behavior, Alpert Medical School, Brown University.

He is an expert on amyloid-related imaging abnormalities and a member of the Alzheimer's Disease and Related Disorders Therapeutic Work Group developing appropriate use recommendations to safely guide the clinical use of new disease-modifying treatments. He serves as a consultant for drug development to the NIH, the Alzheimer's Association, and the Alzheimer's Disease Drug Discovery Foundation. He has published over 400 scientific articles and abstracts, edited 3 books and lectures widely about the early diagnosis and prevention of Alzheimer's disease.

SCAN ME!

To view the Abstract Booklet, scan the QR code here or [click this link](#)



# SPONSORS



## Platinum Partner



### **Australian Government**

---

### **Department of Health and Aged Care**

The Australian Government Department of Health and Aged Care develops and delivers policies and programs on health, aged care and sport. We work with a wide range of stakeholders to ensure better health and wellbeing for all Australians. The department is responsible for administering aged care legislation and developing policy that supports high quality, safe and sustainable aged care. We deliver a broad range of programs relating to aged care, including in-home aged care, as well as funding for residential aged care. We also support people to navigate and access aged care services through My Aged Care. We also fund dementia programs to support people living with dementia, their families and carers. We are making changes to aged care that will improve aged care in Australia now and into the future. Many of the changes are in response to the recommendations of the Royal Commission into Aged Care Quality and Safety. Our vision is to deliver the highest quality person-centred care for older people – where and when they need it.

To find out more and to have your say about the changes, visit the **Aged Care Engagement Hub**: [AgedCareEngagement.health.gov.au](https://AgedCareEngagement.health.gov.au).  
**You can contact us on:** [dementia@health.gov.au](mailto:dementia@health.gov.au)

# SPONSORS



## Diamond Sponsor



Lilly is a medicine company making life better for people around the world. We've turned science into pioneering new discoveries for nearly 150 years, and today, our medicines support more than 51 million people across the globe. Harnessing the power of biotechnology, chemistry and genetic medicine, our scientists are urgently advancing new discoveries to solve some of the world's most significant health challenges; redefining diabetes care; treating obesity; advancing the fight against Alzheimer's disease; providing options for some of the most debilitating immune system disorders; and targeting the most difficult-to-treat cancers.

For over 35 years, Lilly has driven scientific progress in Alzheimer's disease to improve diagnostics, treatments, and outcomes for patients. It's our vision that, in 10 years, timely detection, accurate diagnosis, appropriate treatment and ultimately prevention, will be a reality for people with Alzheimer's disease. With each step towards a healthier world, we're motivated by one thing: making life better for millions more people. That includes delivering innovative clinical trials that reflect the diversity of our world and working to ensure our medicines are accessible and affordable. To learn more visit [Lilly.com.au](http://Lilly.com.au) or follow us on [LinkedIn](#).



## Gold Sponsor



Dementia Australia is the source of trusted information, education and services for the estimated more than 421,000 Australians living with dementia, and the more than 1.6 million people involved in their care. We advocate for positive change and support vital research. We are here to support people impacted by dementia, and to enable them to live as well as possible. No matter how you are impacted by dementia or who you are, we are here for you.

For support, please contact the National Dementia Helpline on 1800 100 500. An interpreter service is available. The National Dementia Helpline is funded by the Australian Government. People looking for information can also visit [dementia.org.au](http://dementia.org.au)

# SPONSORS



## Silver Sponsors



Australian e-Health  
Research Centre



## Bronze Sponsors



National Centre  
for Healthy Ageing



## Conference Supporter







**We represent** the more than **400,000 Australians** living with **dementia** and the almost **1.5 million Australians** involved in their care.

Dementia Australia is the **source of trusted information**, education and support services.

Together, we can **reshape** the impact of Dementia.

**Visit us at our exhibition booth.**

National Dementia Helpline **1800 100 500**

Find us online [dementia.org.au](https://www.dementia.org.au)



**Dementia  
Australia®**

## Registrations

### **I can no longer attend the forum in-person. Can I attend online instead?**

Please email [adrf@jtproductionmanagement.com](mailto:adrf@jtproductionmanagement.com) to change your registration from in-person to online to receive the streaming link. Refunds for the difference are only applicable when made 30 days prior to the forum (3 May 2024).

### **I can no longer attend the forum at all. Can I get a refund?**

Yes. Cancellations can be made 30 days prior to the forum (3 May 2024). Please refer to the cancellation policy on [our website here](#).

### **When do registrations close?**

Registrations will close on 19 May 2024. If you would like to register, [click here](#).

### **Can I transfer my delegate ticket to a colleague?**

Yes. If you are registered for the conference and can no longer attend, you may substitute a colleague to attend in your place. To request approval to send a substitute to the conference, please contact the events team at [adrf@jtproductionmanagement.com](mailto:adrf@jtproductionmanagement.com)

### **Do I need to purchase additional tickets to attend the social event?**

The price of the in-person conference ticket, including single day tickets for Monday and Continuing Education tickets, includes the Welcome Reception, which will be held on Monday, June 3, from 5:30 p.m. to 7:00 p.m.

### **What time zone is shown on the program?**

The program shows Australian Eastern Standard Time (AEST).

## Program

### **Where can I find the program?**

Our program is hosted on the Sched. app. You can access it through [this link here](#) and you can also download the app. Your QR code on the back of your lanyard card will also take you directly to this link. There will be signage in the venue for scanning. Additionally, you can find the program on our website under the Program tab.

### **Will we have access to abstracts?**

Yes. The Abstract booklet is available via the link on page 25, on the program page on the website and via QR codes during the forum.

# FAQs

## **Can I get a printed copy of the program?**

Unfortunately, the program is only available as a digital copy for sustainable reasons. You can access the program via the QR code on the program page above, on the back of your lanyard or here.

## **Will I receive a certificate of attendance for the conference?**

If you require a certificate of attendance, please email [adrf-info@unimelb.edu.au](mailto:adrf-info@unimelb.edu.au) to request a copy.

## **Continuing Professional Development Sessions**

### **Which sessions are accredited?**

The Continuing Professional Development sessions scheduled on Monday 3 June in the Ballroom are RACGP Approved and Accredited. General Practitioner's attending these sessions will be required to complete a one-page Evaluation form at the end of the session and will receive a Statement of Attendance and Completion certificate, post conference. Attendance will go towards their CPD points. Please collect and return this form at the registration desk when you collect your conference lanyard.

### **Is the Continuing Medical Education- Specialists Session ('Safe and Appropriate Use of Anti Amyloid Antibodies') also accredited?**

No. Although it falls under the Continuing Professional Development program, this is not RACGP accredited, however, attendees can count it towards their CPD points for conference attendance.

## **Virtual Attendance**

### **Which sessions will be live-streamed?**

All sessions of the main program held in the ballroom, will be live-streamed. This includes all Keynotes and some Symposia sessions. Concurrent rooms, Springbook and Binna Burra, will not be live-streamed.

### **Can I watch the live-streamed sessions after the forum?**

Select sessions may be available post conference via the ADRF website, YouTube or ADNeT social media, however, as it is live-streamed and there is no virtual platform, sessions are not available on-demand.

### **Can more than one person use the conference login details?**

No. Each registration is just for a single person, and your unique password is for your personal use only. Content cannot be exported out of the platform for a shared experience.

# FAQs

## **When will I receive the website and my unique password to attend the event virtually?**

Your personal login will be included in an email you will receive one week before the forum commencement date.

## **Will online delegates be able to participate in the Q&A sessions?**

Unfortunately no, the online attendance has a slightly more limited experience than previous years as we move back to an in-person forum.

## **I am having technical issues, how do I solve them?**

Please use the chat button on the bottom right-hand side of the streaming webpage. One of our professional technical support members will respond to you. Please note that they are only online during the hours of the forum. If you message after hours, they will respond during the forum session times.

## **What is the best web browser to use for the virtual platform?**

We recommend using Google Chrome.

## **Venue & Accommodation**

### **Is the conference venue accessible? Both accommodation and conference spaces?**

For more information about the physical features of our accessible rooms, common areas or special services relating to a specific requirement please call **+61 7-5592 9800**

### **Is there a Quiet Room for People Living with Dementia and their Carers?**

Yes. A dedicated quiet room with refreshments is available for people living with dementia and their carers. Please ask one of the friendly staff for the location at the forum registration desk upon collecting your lanyard.

### **Is wireless internet available at JW Marriott Gold Coast Resort & Spa?**

Yes, there is free wi-fi available in public areas throughout the hotel.

### **Is there parking at the conference?**

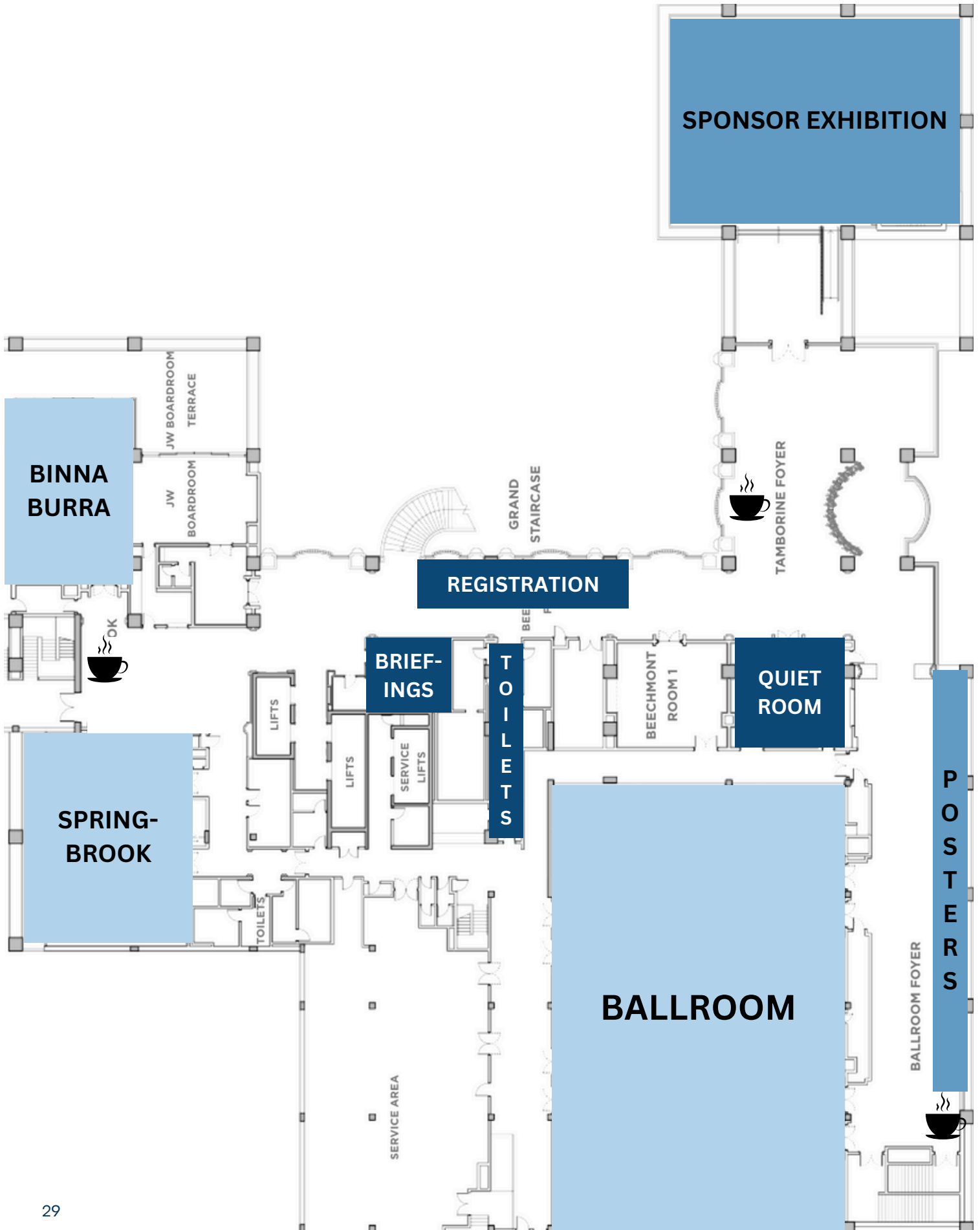
Yes. There is onsite parking, \$5 hourly and \$24 daily rates. There is an off-site public car park approximately 0.5km from the venue.

### **Is the conference venue accessible via public transport?**

The following transport lines have routes that pass near Marriott Surfers Paradise Resort:

- Bus routes 705 and 740
- Surfers Paradise, Cypress Ave, 7 min walk
- Ferny Ave at Palm Avenue, 8 min walk
- Light rail, Cypress Avenue Station, 6 min walk

# MAP





# AUSTRALIAN DEMENTIA RESEARCH FORUM *2024*

**3-5 JUNE 2024**

